

smartmusic lesson plans

What's My Musical Range?



Grade Level: All Levels Class: Band

Author: Sam Fritz and Phil Louden

**Teacher
Instructions**

Overview

As music becomes more difficult, range becomes increasingly important. SmartMusic's scale patterns are an excellent way for students to measure and develop their own musical range.

Objectives

Students will:

1. Determine their current instrument range using SmartMusic's chromatic scale #420 or #422
2. Perform notes in their range at quarter note = 50.
3. Become familiar with chromatic fingerings on instrument.
4. Become familiar with the half-step movement of chromatic scales.
5. Recognize enharmonic notes.

National Music Content Standards addressed:

2. Performing on instruments alone and with others, a varied repertoire of music.
6. Listening to, analyzing, and describing music.
8. Understanding the relationship between music, the other arts, and disciplines outside the arts.

Assignment Suggestions

Using SmartMusic's chromatic scales, have students identify and play notes in their range. Have students chart their range on a classroom chart. Use the guide below as a starting place.

Beginner	SmartMusic chromatic scale #420 one octave
Intermediate	SmartMusic chromatic scale #420 one octave
Intermediate/Advanced	SmartMusic chromatic scale #422 two octaves
Advanced	SmartMusic chromatic scale #422 two octaves



smartmusic®

smartmusic lesson plans

What's My Musical Range?



Teacher Procedures

1. Give students a printed copy SmartMusic's chromatic scale #420 or #422 and have them circle the notes that they already know. You may print copies of the scale directly from SmartMusic using the print button or by using Finale's Exercise Wizard.
2. Review sharps, flats and enharmonic notes with students.
3. Demonstrate that you can change the octave in the options menu.
4. Show students how to click on a note to see it's fingering.
5. Ask students to record their range of notes on the classroom display chart (included on page 3). You might also have students keep a personal record to track progress.

Teacher Instructions

Assessment

This lesson can be assessed in multiple ways. Ask students to play, at a tempo of quarter note = 50, the notes that they circled on the chromatic scale sheet. Have students define the following terms: sharp, flat, natural, enharmonic and chromatic scale.

Teacher Suggestions

Exercises for this lesson could be printed directly from the SmartMusic exercise window. A shortcut to printing the exercise for each instrument is to use the Exercise Wizard in Finale.

Lesson Extensions

1. Perform a musical composition that includes chromatic scale patterns.
2. Ask students to write enharmonic spellings. For example, "Write the enharmonic equivalent of Bb, F#, Ab, B#, and Eb."
3. Have students write a one-octave or two-octave chromatic scale using sharps as they ascend and flats as they descend.
4. Have students gather data from the range chart. Use the following prompts for exploration. Which group of instruments has the widest range? Which group of instruments has the most limited range? Which instrument has highest range? Which instrument has the lowest range? Which instruments have similar ranges?
5. Follow up with questions about how a composer might use tone color or range to create musical effects. Continue the discussion by playing some musical examples that include extended range and use of tone color.
6. Use the range chart as part of a classroom portfolio. Repeat the assignment at a later date and have students compare ranges.

smartmusic lesson plans

What's My Musical Range?



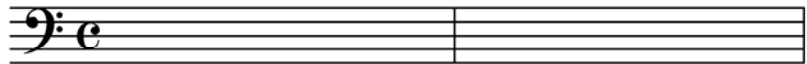
Classroom Display Chart

Teacher Instructions

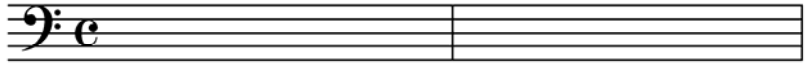
Lowest Note

Highest Note

Instrument _____
Number of Notes in Range _____



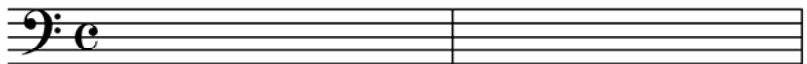
Instrument _____
Number of Notes in Range _____



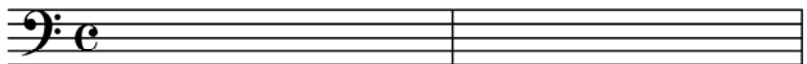
Instrument _____
Number of Notes in Range _____



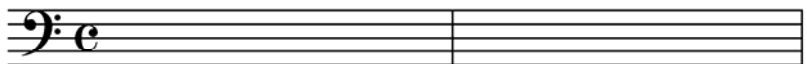
Instrument _____
Number of Notes in Range _____



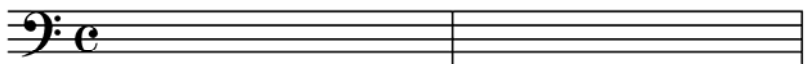
Instrument _____
Number of Notes in Range _____



Instrument _____
Number of Notes in Range _____



Instrument _____
Number of Notes in Range _____



smartmusic lesson plans

What's My Musical Range?



Teacher Instructions

Lowest Note

Highest Note

Instrument _____
Number of Notes in Range _____



Instrument _____
Number of Notes in Range _____



Instrument _____
Number of Notes in Range _____



Instrument _____
Number of Notes in Range _____



Instrument _____
Number of Notes in Range _____



Instrument _____
Number of Notes in Range _____



Instrument _____
Number of Notes in Range _____



smartmusic

What's My Musical Range?

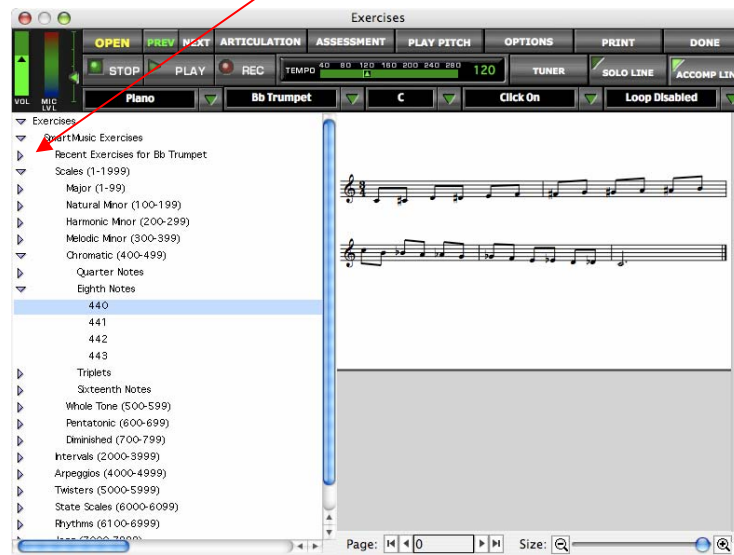


Name: _____ Instrument: _____
Class/Hour: _____ Date Due: _____
Grade: _____

**Student
Assignment**

Directions

1. Choose "Open a SmartMusic Exercise" from the Setup Wizard or click on the Exercise button on the main interface. Select "Scales" and then "Chromatic." Your teacher has assigned Scale # _____
2. From the **Options** menu, check **Octave Up** if needed.
3. Not sure of a note? Click on it to view its fingering.
4. Practice the scale with a tempo of 50.
5. Circle the notes that are in your range on the music provided on the next page.
6. Turn in the assignment sheet and record your range on the classroom chart.



For additional help, go to the Help Menu and select the SmartMusic QuickStart videos. Click "Exercises" and then choose "Selecting Exercises."

Student Checklist

- Filled in the information at the top of this page.
- Read the directions and circled all playable notes on page 2.
- Recorded range on the classroom chart. (Or submitted results as your teacher instructed.)



smartmusic®



Treble Clef Instruments

Musical notation for Treble Clef Instruments. It consists of three staves of music in C major, 4/4 time. The first staff starts with a treble clef and a common time signature. The second staff is labeled with a measure number '5' and the third with '8'. The music features a sequence of eighth and sixteenth notes, with various accidentals (sharps and flats) indicating a chromatic scale.

Bass Clef Instruments

Musical notation for Bass Clef Instruments. It consists of three staves of music in C major, 4/4 time. The first staff starts with a bass clef. The second staff is labeled with a measure number '16' and the third with '20'. The music features a sequence of eighth and sixteenth notes, with various accidentals (sharps and flats) indicating a chromatic scale.

smartmusic

What's My Musical Range?



Need Help with SmartMusic?

Call toll-free 1-866-240-4041, Monday through Friday, 8:30 a.m. to 8:00 p.m., Central Time.

**Student
Assignment**