



Student Enrollment

It's easy to receive your SmartMusic assignments!

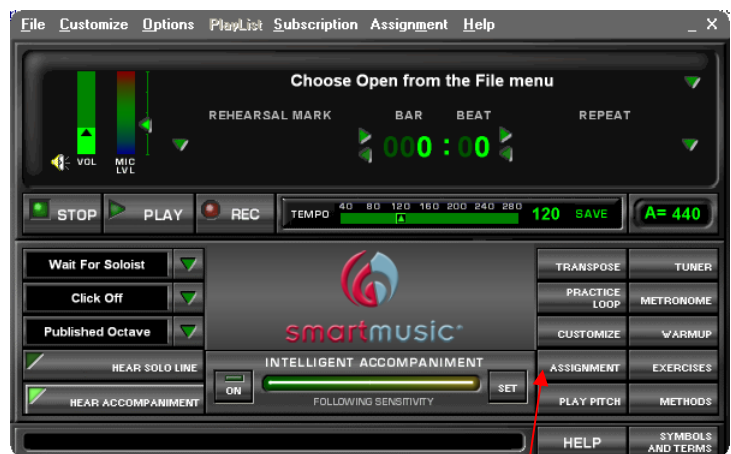
What you will need:

- Access to a computer with a SmartMusic subscription installed and activated*
- An active Internet connection

Your screen may look like this:

Steps:

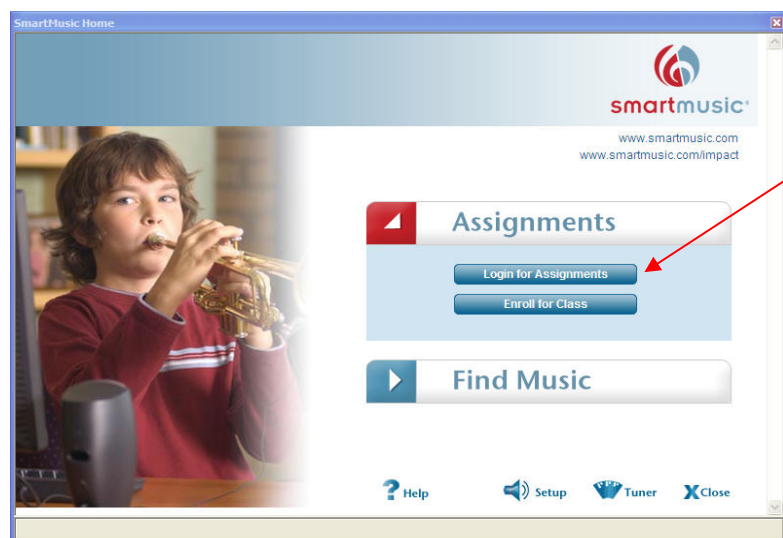
1. Open SmartMusic.
2. Click the Assignment button on either screen that you see here.
3. Click "Enroll for class."
4. Follow the on-screen instructions to locate your school and teacher.



Or it may look like this:

Need more help?

Don't forget about the QuickStart Videos at www.smartmusic.com/support.



© 2008 MakeMusic, Inc.
All rights reserved.

9GC75-4 0908

* SmartMusic 11 or higher is required to access the latest repertoire.