



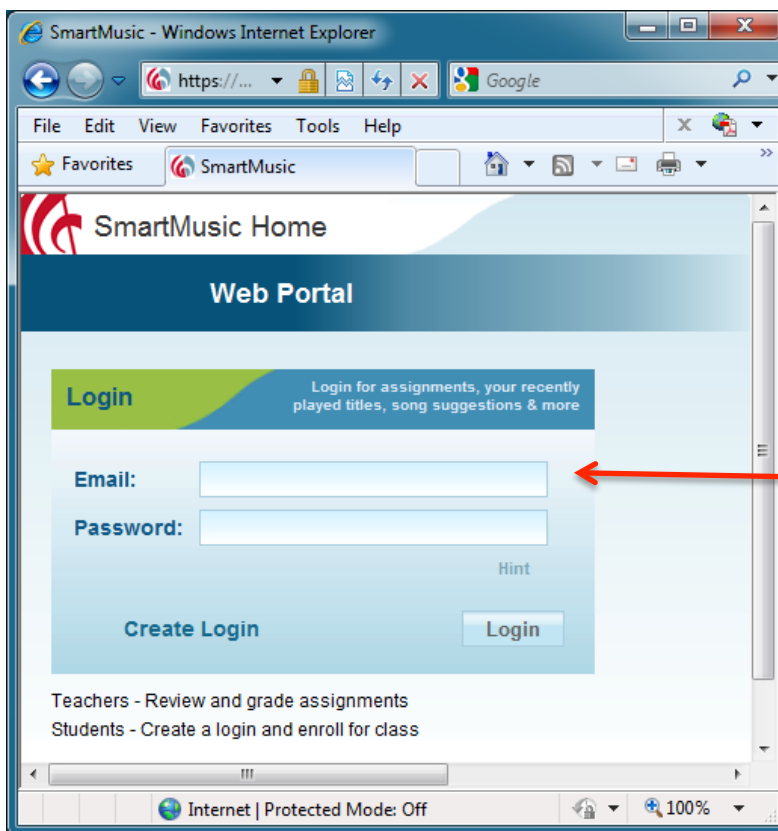
Student Enrollment for Groups

smartmusic®

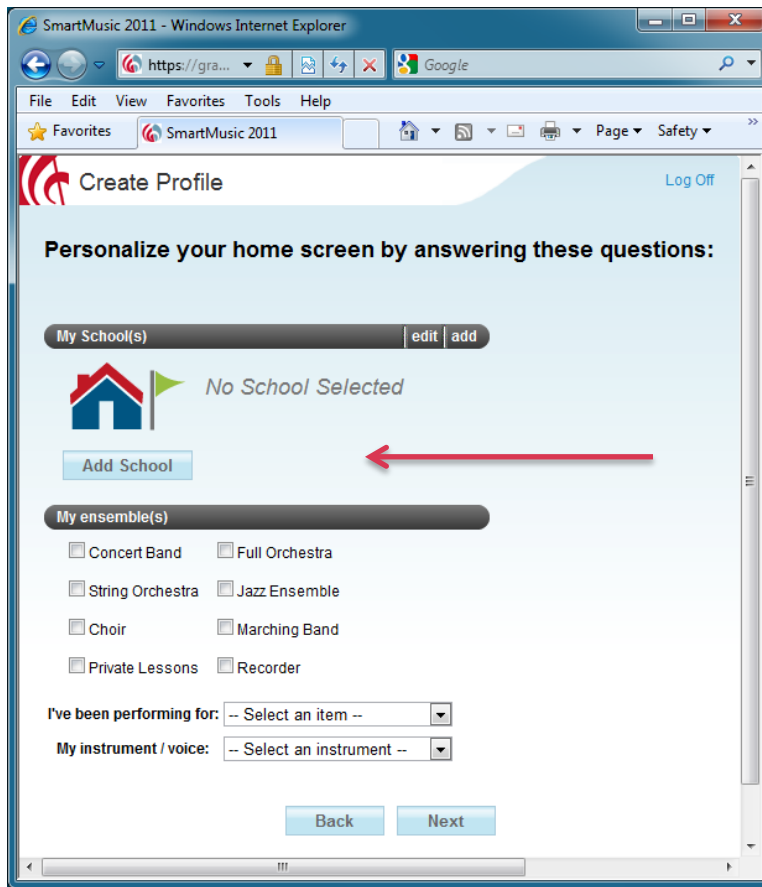
Enrolling groups of students in the SmartMusic gradebook

It's quick and easy to enroll an entire group of students in a computer lab or other similar setting. For this option, computers must have Internet access, but SmartMusic does not need to be installed.

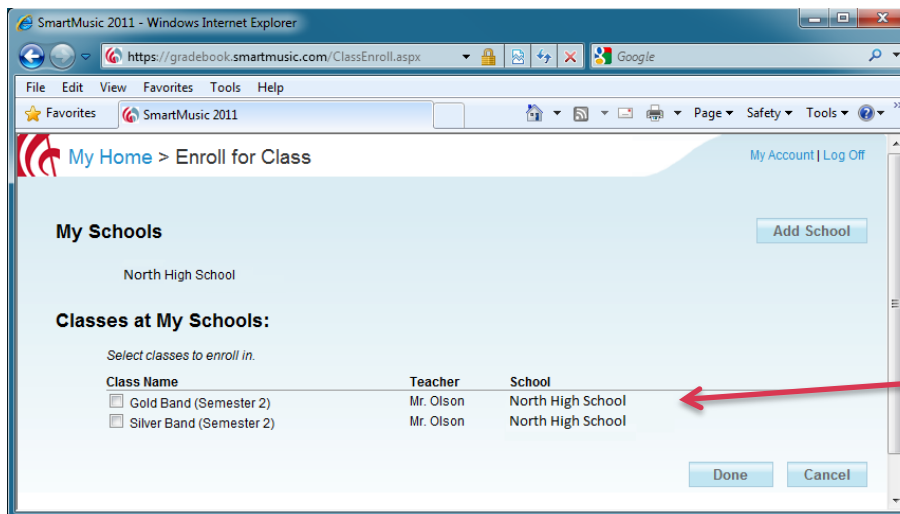
1. Open this URL: <https://gradebook.smartmusic.com/> from any computer with Internet access. If you have a SmartMusic account, log in. If you don't have a SmartMusic account, click on "Create Login."



2. Create your personal profile on the Create Profile screen.



3. Select your class.



Need more help?

Don't forget about the QuickStart Videos at www.smartmusic.com/support.

* SmartMusic 2011 or higher is required to access assignments.